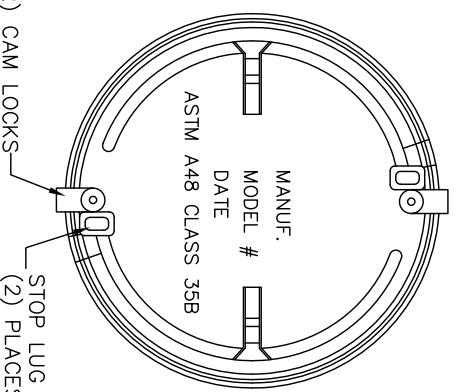


PLAN VIEW

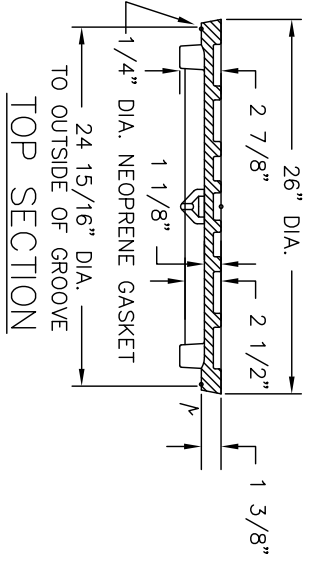
(4) 1" DIA. HOLES ON
30 1/2" DIA. B.C.
1" LETTERING
(2) PICKBARS
SEE DETAIL
(2) CAM LOCKS
SEE DETAIL



BOTTOM VIEW OF COVER

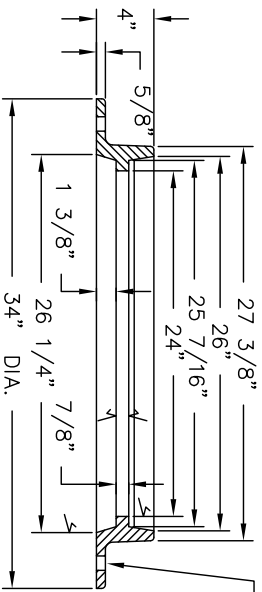
(2) CAM LOCKS
STOP LUG
(2) PLACES

∇ = MACHINED SURFACE



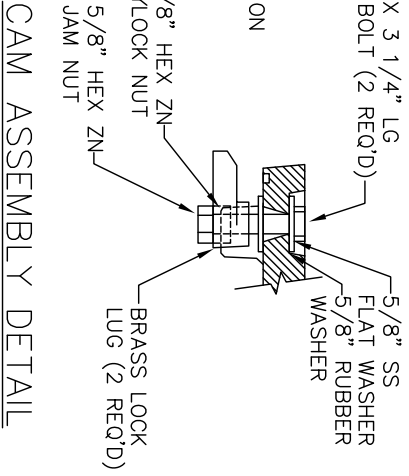
TOP SECTION

TO OUTSIDE OF GROOVE

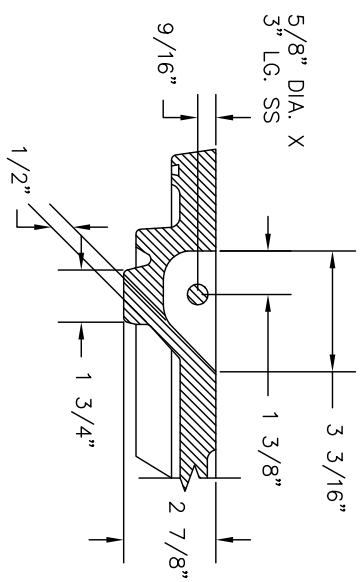


FRAME SECTION

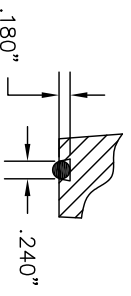
(4) 1" DIA. HOLES ON
30 1/2" DIA. B.C.



CAM ASSEMBLY DETAIL



PICKBAR DETAIL



GROOVE DETAIL

- NOTES:
- A. TO BE USED IN THE 100 YEAR FLOOD AREA AS DETERMINED BY F.E.M.A.
 - B. MANHOLE RINGS AND COVERS SHALL BE MADE OF GRAY CAST IRON AND SHALL CONFORM TO ASTM A48, CLASS 35B.
 - C. FOR OUTFALL USE ONLY - NOT FOR USE ON MANHOLES LOCATED IN ROADWAYS.
 - D. APPROVED MANUFACTURERS:
 - U.S. FOUNDRY, MODEL 725
 - EAST JORDAN IRON WORKS, MODEL 2026ZYH FRAME WITH 2027A1G5 CAMLOCK COVER
 - OR APPROVED EQUAL.
 - E. OUTFALL MANHOLE LOCKABLE RING & COVER, TYPE CO SHALL BE PRE-CAST ONTO THE OUTFALL MANHOLE CONE SECTION.
 - F. ESTIMATED WEIGHTS ARE:

COVER	132 LBS
FRAME	160 LBS
UNIT	292 LBS

CITY OF HIGH POINT
NORTH CAROLINA

ENGINEERING SERVICES DEPARTMENT

APPROVED JULY 3, 2007

BKR
DIRECTOR

ISSUED	7-3-07
REVISIONS	

STANDARD DRAWING FOR

OUTFALL MANHOLE LOCKABLE RING AND COVER, TYPE CO

FOR USE IN WATERTIGHT OUTFALL MANHOLES

RC_OF_CONE.DWG

309.00

SHEET 1 OF 1