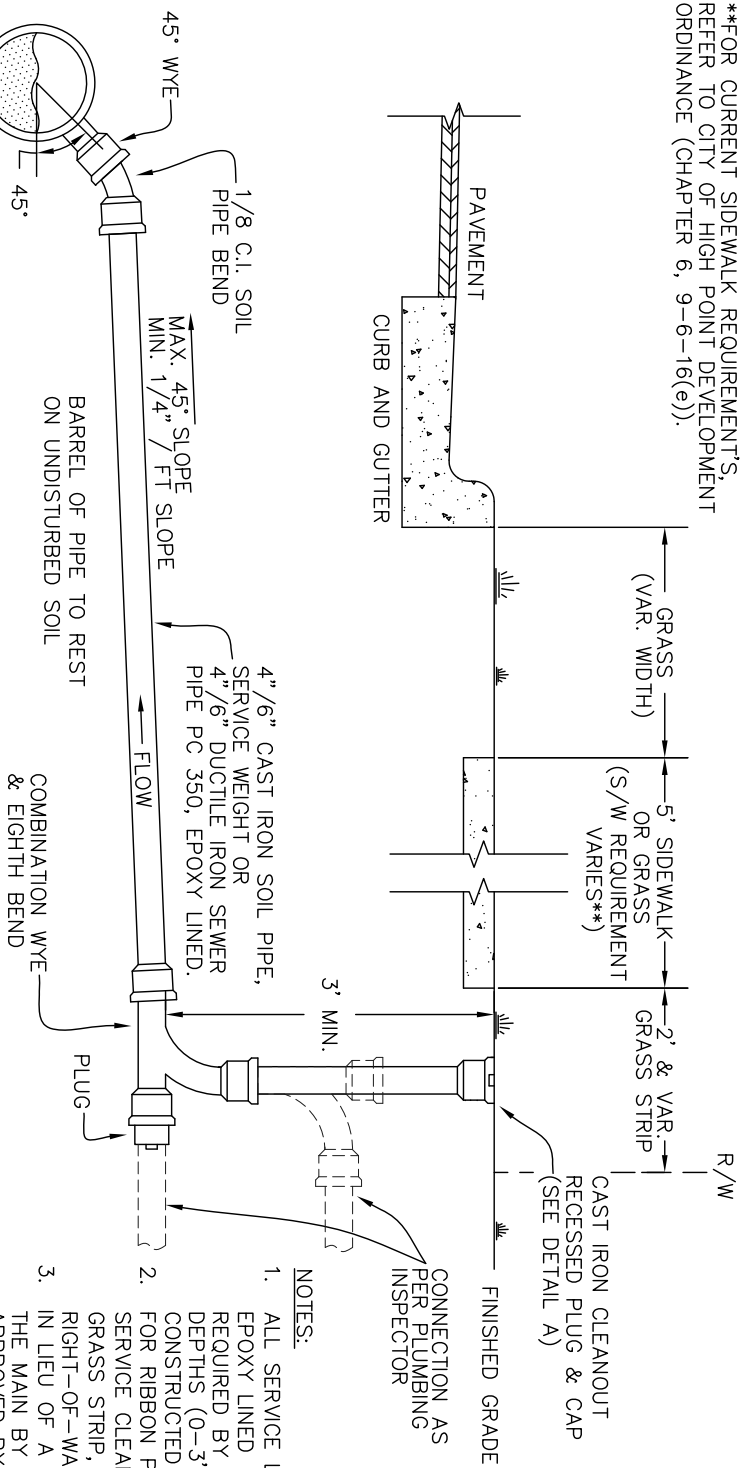
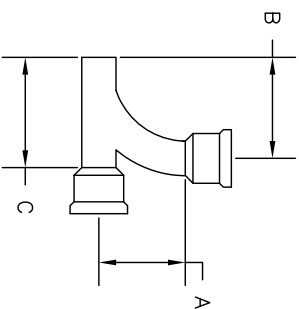


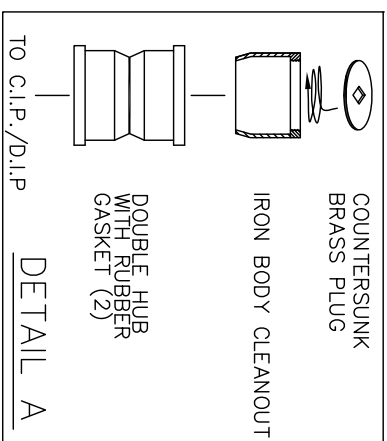
**\*\*FOR CURRENT SIDEWALK REQUIREMENTS, REFER TO CITY OF HIGH POINT DEVELOPMENT ORDINANCE (CHAPTER 6, 9-6-16(e)).**



SIZE (IN)	A (IN)	B (IN)	C (IN)	WEIGHT (LBS)
4 X 4	9	12 1/16	12	20
6 X 4	10	12	12	25
6 X 6	12 7/8	16 1/16	15	35



LONG TURN SWEEP COMBINATION WYE & EIGHTH BEND



**NOTES:**

1. ALL SERVICE LATERALS SHALL BE CAST IRON SOIL PIPE. EPOXY LINED DUCTILE IRON SEWER PIPE, PC 350, MAY BE REQUIRED BY THE ENGINEER IN AREAS OF SHALLOW DEPTHS (0-3') OR IN DEPTHS WHERE THE MAIN IS CONSTRUCTED OF DUCTILE IRON PIPE.
2. FOR RIBBON PAVEMENT ROADS, THE SANITARY SEWER SERVICE CLEANOUT SHALL BE LOCATED WITHIN THE GRASS STRIP, WHICH IS LOCATED 2' INSIDE OF THE RIGHT-OF-WAY LINE.
3. IN LIEU OF A WYE, THE SERVICE MAY BE CONNECTED TO THE MAIN BY USING A TAPPING MACHINE AND SADDLE APPROVED BY THE ENGINEERING SERVICES DEPARTMENT.
4. UNDER NO CIRCUMSTANCES SHALL A BEND BE PLACED IN ANY SECTION OF A SEWER SERVICE LATERAL WITHOUT PERMISSION OF THE ENGINEERING SERVICES DEPT.
5. "NO HUB BAND" CLAMPS WILL NOT BE ALLOWED ON THE CITY SERVICE. INSTEAD, A DOUBLE HUB PIPE SECTION SHALL BE USED.
6. THE DITCH SHALL BE COMPACTED IN SIX INCH (6") LAYERS WITH A MECHANICAL TAMP.
7. SEE THE ABOVE DETAIL FOR DIMENSIONS OF APPROVED COMBINATION WYE AND EIGHTH BEND. APPROVED MANUFACTURERS INCLUDE:  
 - CHARLOTTE PIPE, MODEL NUMBER "SV-33"  
 (LONG TURN PATTERN).  
 - OR APPROVED EQUAL

CITY OF HIGH POINT  
 NORTH CAROLINA  
 ENGINEERING SERVICES DEPARTMENT  
 APPROVED: MAX 3, 2007  
 DIRECTOR

ISSUED 5-3-07  
 REVISIONS

STANDARD DRAWING FOR  
**SANITARY SEWER SERVICE (NEW)**  
 FOR VCP AND DIP SANITARY MAINS

SFR\_CL\_NEW.DWG  
**330.00**  
 SHEET 1 OF 1