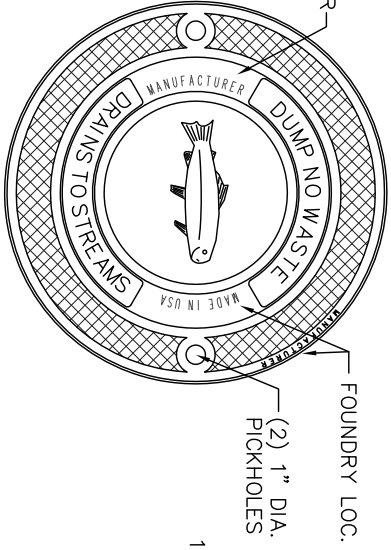
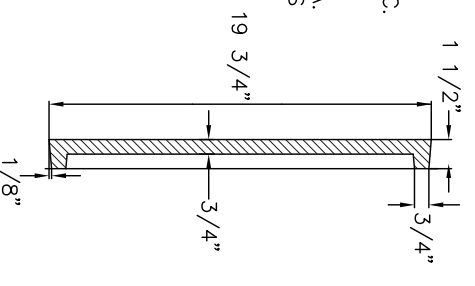


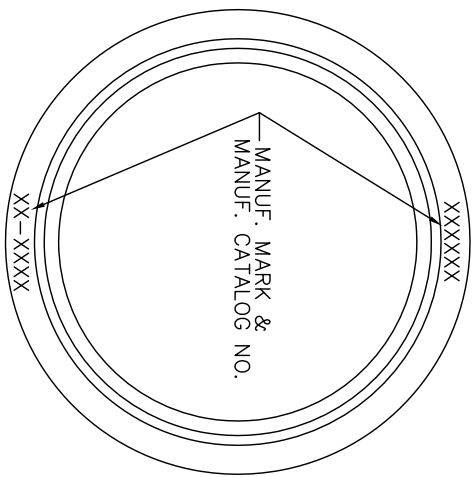
COVER BACK



PREFERRED COVER FACE



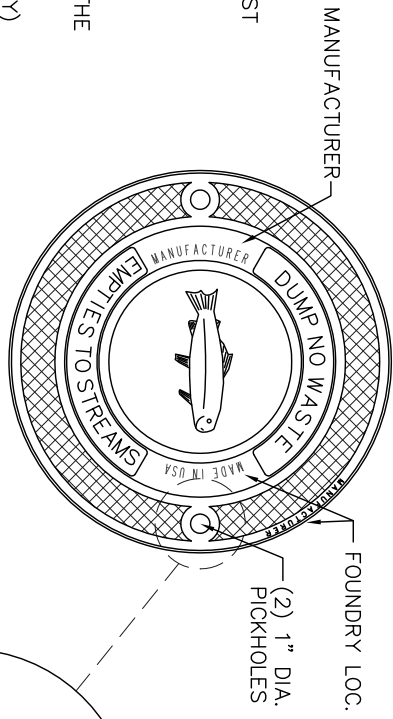
COVER SECTION



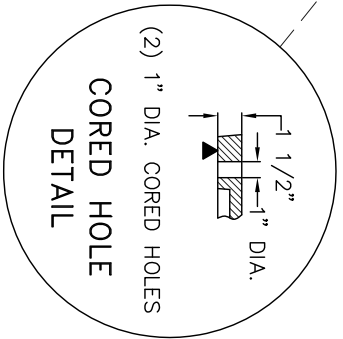
FRAME TOP VIEW

NOTES:

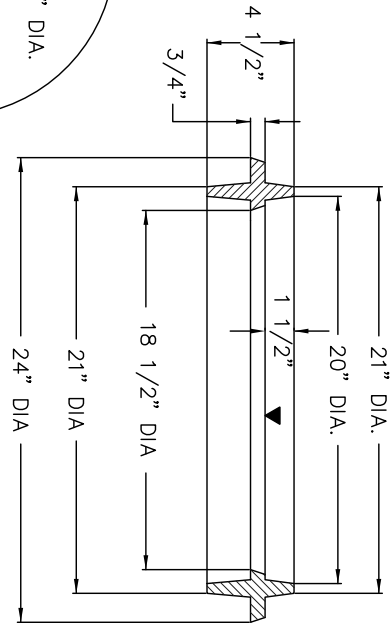
1. FRAME & COVER SHALL BE GRAY CAST IRON MEETING ASTM A48 CLASS 35B SPECIFICATIONS.
2. MINIMUM AVERAGE WEIGHT:
COVER 76 LBS
FRAME 61 LBS
UNIT 137 LBS
3. FRAME AND COVER SHALL CONTAIN THE FOLLOWING INFORMATION:
1. MANUFACTURER'S MARK
2. LOCATION OF FOUNDRY (COUNTRY)
3. MANUFACTURER'S CATALOG NO.
(SEE COMPONENT DIAGRAMS FOR SPECIFICS)
4. APPROVED MANUFACTURERS:
EAST JORDAN IRON WORKS, V-1887
U.S. FOUNDRY, USF 1162 RING & LV COVER



OPTIONAL COVER FACE



▼ = MACHINED SURFACE



FRAME SECTION

CITY OF HIGH POINT
NORTH CAROLINA
ENGINEERING SERVICES DEPARTMENT

ISSUED 03-01-07
REVISIONS

APPROVED: MARCH 1, 2007
BKR
DIRECTOR

STANDARD DRAWING FOR
FRAME AND COVER
FOR CATCH BASIN TYPE A

CBA_FC_306.DWG
402.00
SHEET 1 OF 1