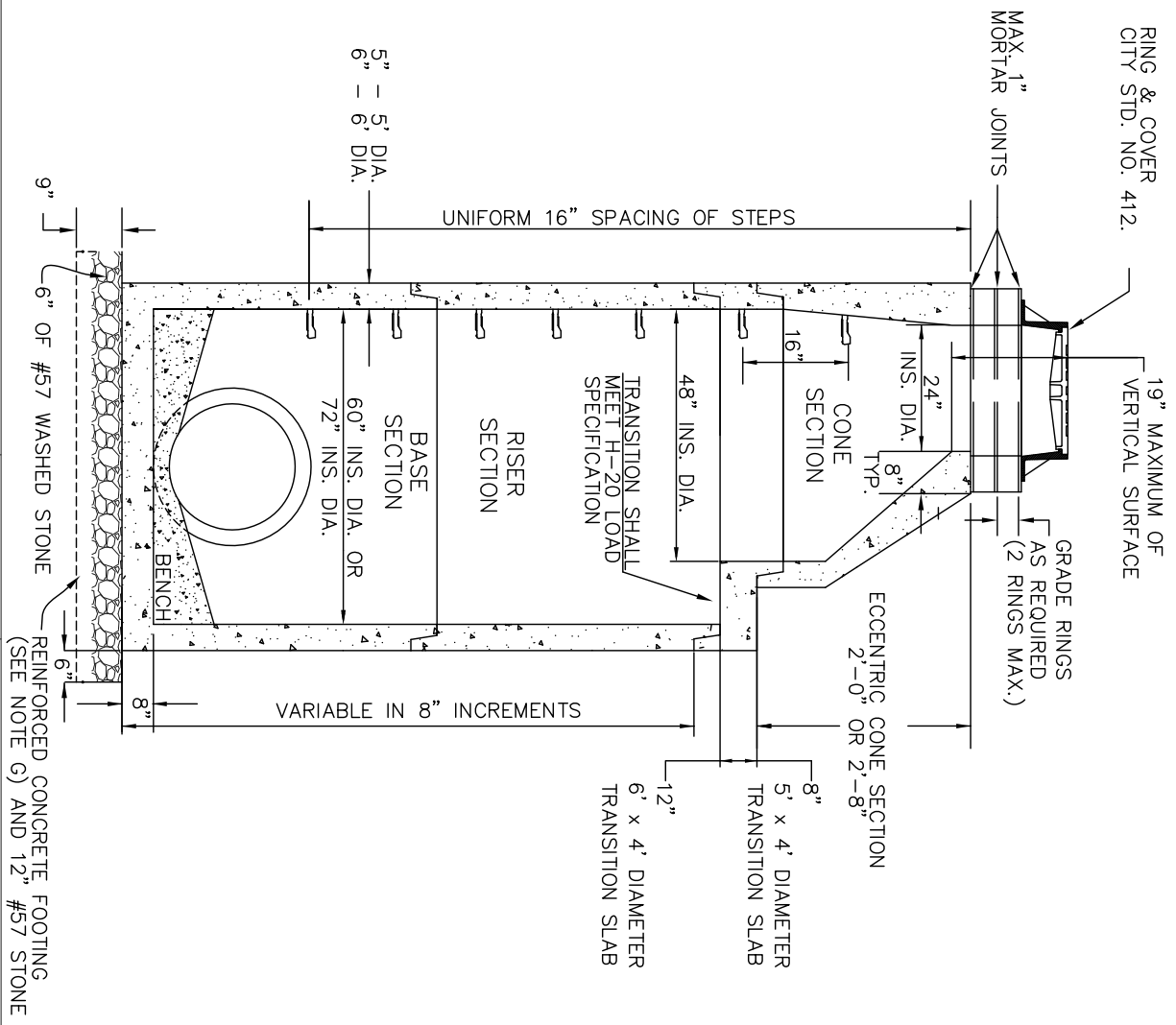


RING & COVER  
CITY STD. NO. 412.



TYPICAL MANHOLE DIMENSIONS:  
(UNLESS OTHERWISE NOTED ON PLANS)  
8" TO 18" RCP PIPE - 4'-0"  
21" TO 30" RCP PIPE - 5'-0"  
36" TO 48" RCP PIPE - 6'-0"

**NOTES:**

- A. ALL PRECAST SEWER MANHOLE SECTIONS SHALL MEET THE REQUIREMENTS OF ASTM C-478 AND AASHTO M199. THE PRECAST CONCRETE COMPRESSIVE STRENGTH SHALL BE A MINIMUM OF 4000 PSI.
- B. ALL MANHOLE STEPS SHALL CONFORM TO CITY STD. NO. 303 OR AN APPROVED EQUAL. STEPS SHALL BE INSTALLED IN LINE WITH THE VERTICAL SIDE OF THE CONE.
- C. THE MANHOLE JOINTS SHALL BE SEALED BY A BUTYL RUBBER SEALANT. THE BUTYL RUBBER SEALANT SHALL BE 1-1/4" SQUARE (5" DIA.) AND 1-1/2" SQUARE (6" DIA.) AND SHALL CONFORM TO ASTM C-990 AND AASHTO M-198.
- D. THE LIFT INSERT AND HOLES SHALL BE ACCORDING TO CITY STD. NO. 305. ALL LIFT HOLES SHALL BE COMPLETELY FILLED WITH NON-SHRINK GROUT AFTER MH INSTALLATION.
- E. ALL PIPE ENTRANCES AND CONNECTIONS SHALL CONFORM TO SECTION 840 OF THE CURRENT EDITION OF THE NCDOT STANDARD SPECIFICATIONS FOR ROADS & STRUCTURES.
- F. IF A FLAT-TOP SECTION IS NECESSARY, IT SHALL BE APPROVED BY THE ENGINEER AND SHALL BE DESIGNED FOR HS-20 LOADING.
- G. A REINFORCED CONCRETE FOOTING IS REQUIRED WHEN THE MANHOLE IS OVER 12' OR ON A POOR SOIL BASE. THE REINFORCED CONCRETE FOOTING MAY BE POURED OR PRECAST ACCORDING TO CURRENT NCDOT STD. NO 1525.01 SHEET 2 OF 2. THE CONTRACTOR HAS THE OPTION OF PROVIDING AN EXPANDED MANHOLE BASE SECTION AND SETTING THE BASE SECTION ON 12" MIN. #57 STONE WITH NO EXTRA COST TO THE CITY.
- H. ALL PIPE OPENINGS SHALL BE CAST TO ELEVATIONS SPECIFIED ON CONTRACT PLANS OR TO MEET JOB REQUIREMENTS.

REINFORCED CONCRETE FOOTING  
(SEE NOTE G) AND 12" #57 STONE

CITY OF HIGH POINT  
NORTH CAROLINA  
ENGINEERING SERVICES DEPARTMENT  
APPROVED: MARCH 1, 2007  
DIRECTOR

ISSUED 03-01-07
REVISIONS
05-10-07

STANDARD DRAWING FOR  
**PRECAST STORM MANHOLE, 5' & 6' DIA.**  
FOR STORM SEWER PIPE 21" TO 48"

MH\_ST\_56DIA.DWG  
**411.01**  
SHEET 1 OF 1