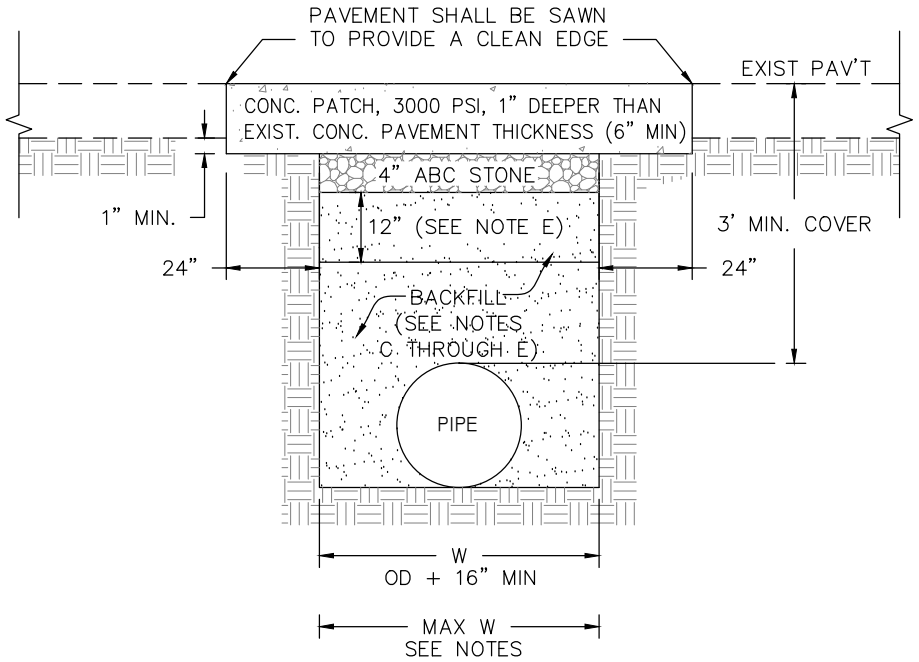


RESIDENTIAL ASPHALT DRIVEWAY



RESIDENTIAL CONCRETE DRIVEWAY

NOTES:

- A. MAX W AND BEDDING REQUIREMENTS WILL VARY BASED ON THE PIPE MATERIAL TYPE. TO DETERMINE, SEE THE BEDDING STANDARDS FOR THE VARIOUS PIPE MATERIALS.
- B. FOR COMMERCIAL DRIVEWAYS, REPAIR IN ACCORDANCE WITH CHP STD 500.00.

BACKFILLING NOTES ACCORDING TO CURRENT EDITION OF NCDOT STANDARD SPECIFICATIONS FOR ROADS & STRUCTURES:

- C. EXCAVATION, TRENCHING, AND BACKFILLING SHALL BE DONE ACCORDING TO SECTION 1505. (WATER & SEWER) IF EXCAVATABLE FLOWABLE FILL IS USED, MAINTAIN STEEL PLATES OVER EXCAVATION FOR 24 HRS.
- D. BACKFILLING SHALL ALSO BE IN ACCORDANCE WITH ARTICLE 300-7 AND COMPACTED TO 95% OF THE AASHTO T99 STANDARD PROCTOR, AS MODIFIED BY THE NCDOT.
- E. THE LAST 12" OF BACKFILL BELOW THE FINISHED SURFACE OF THE SUBGRADE SHALL BE COMPACTED TO 100% OF THE AASHTO T99 STANDARD PROCTOR, AS MODIFIED BY THE NCDOT.

**CITY OF HIGH POINT
NORTH CAROLINA
ENGINEERING SERVICES DEPARTMENT**

APPROVED... SEPTEMBER 15, 2010

BXP
DIRECTOR

ISSUED 9-15-10

REVISIONS

2-6-14

9-12-16

STANDARD DRAWING FOR
DRIVEWAY REPAIR
FOR PIPE/UTILITY CONSTRUCTION

DWREP.DWG

500.01

SHEET 1 OF 1