

www.Armor-Tile.COM

EP ENGINEERED PLASTICS

© 2006 ENGINEERED PLASTICS
 CONFIDENTIAL AND PROPRIETARY DOCUMENT
 ANY ONE OR MORE OF THE FOLLOWING
 PATENTS MAY APPLY
 U. S. PATENT NO. 5,303,669; 5,775,835,
 6,449,790, AND 6,895,622 BS
 C.D.N. PATENT NO. 2,032,532, 2,070,984
 US PATENTS PENDING
 © KENNETH E. SZEKELY

MATERIAL LIST

#	DESCRIPTION	PART No:	QTY
1	ARMOR-TILE	ADA-C-2448-**	1

** COLOR CODE
 YELLOW (YW), RED (RD), BLACK (BK),
 DARK GREY (DG), LIGHT GREY (LG),
 WHITE (W), OCRE YELLOW (OC),
 BLUE (BL), COLONIAL RED (CR)
 CUSTOM COLORS AVAILABLE

No:	DATE	REVISION	APPR.

SCALE

DESIGNED	BY K.S.	DATE 08/90
DRAWN	D.G.	2/22/2006
CHECKED		

PROJECT MANAGER

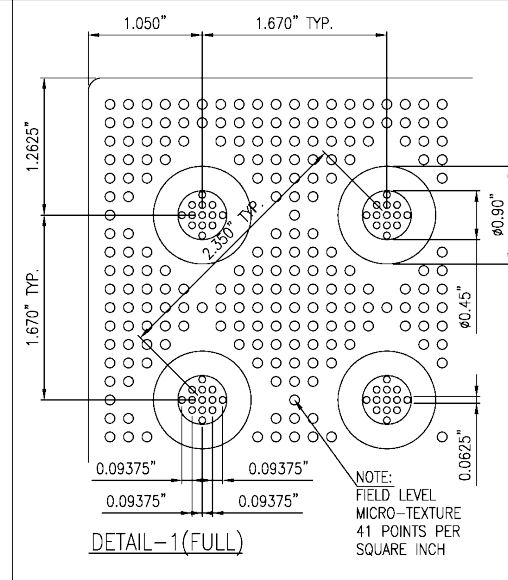
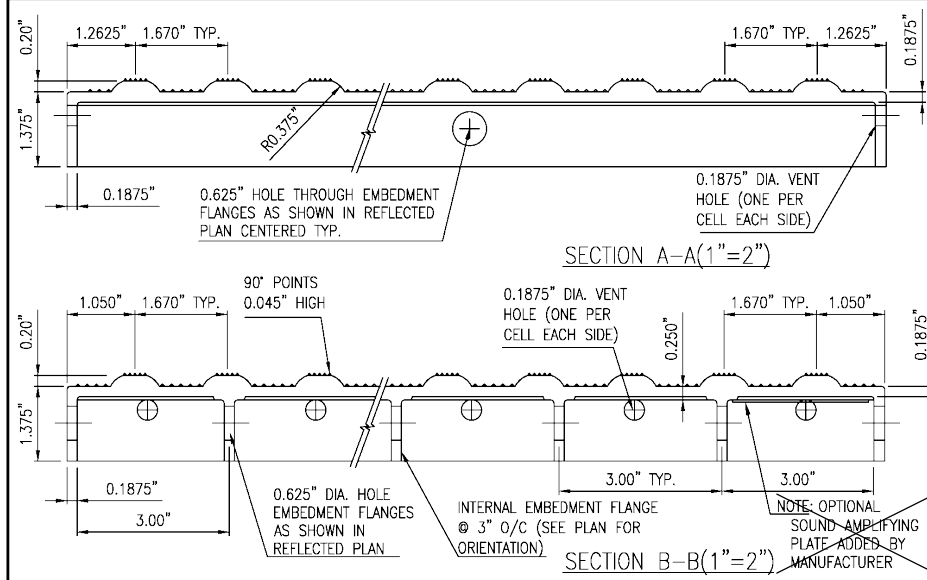
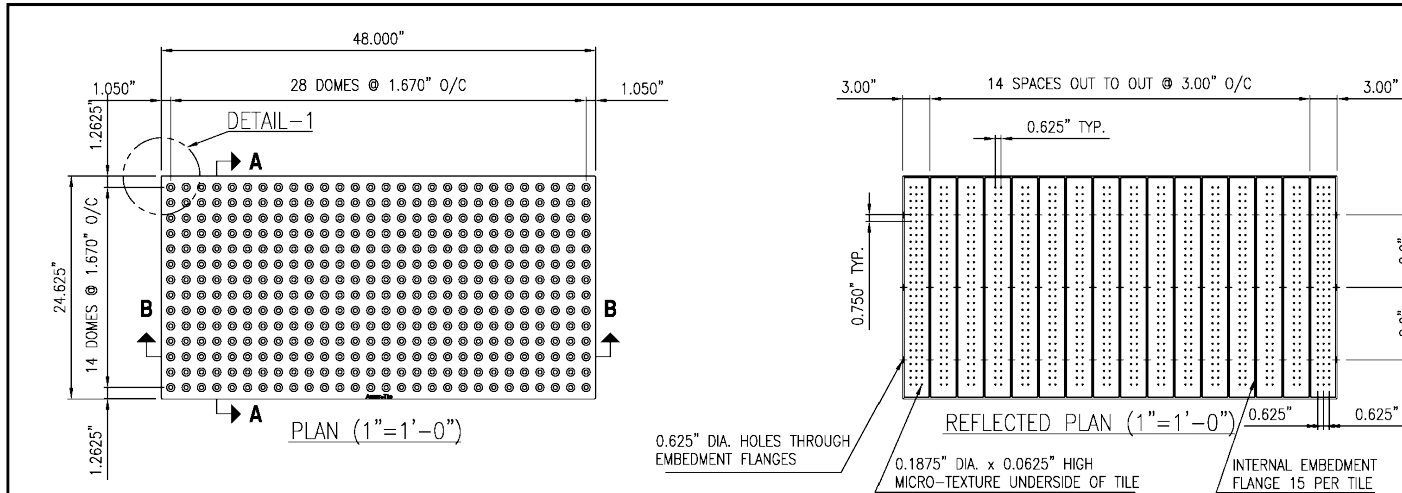
TRACE DETECTABLE WARNING SURFACE	PART No: ADA-C-2448-**
-------------------------------------	---------------------------

MATERIAL
 VITRIFIED POLYMER COMPOSITE

SUBJECT
Armor-Tile™ ADA
 SOUND AMPLIFYING DETECTABLE/TACTILE
 WARNING SURFACE TILE

PROJECT
Armor-Tile™
 DETECTABLE/TACTILE
 WARNING SURFACE TILE
 24" x 48" CAST IN PLACE
 INLINE DOME TACTILE TILE
 PLANS AND DETAILS

DRAWING No: ADA-C-2448	REV. No: 0
---------------------------	---------------



NOTES: A. DRAWING USED BY PERMISSION FROM ENGINEERED PLASTICS, INC., WILLIAMSVILLE, NY.
 B. DETAILS FOR 5'-0" WIDTH ARMOR-TILE ARE SIMILAR TO THE 4'-0" SIZE.

CITY OF HIGH POINT
 NORTH CAROLINA
 ENGINEERING SERVICES DEPARTMENT

APPROVED APRIL 12, 2007

BY: [Signature]
 DIRECTOR

ISSUED	4-12-07
REVISIONS	
5-14-07	
2-6-14	
9-12-16	

STANDARD DRAWING FOR
CURB RAMP
 WITH DETECTABLE WARNING SURFACE

WCR_5.DWG

511.01

SHEET 3 OF 3