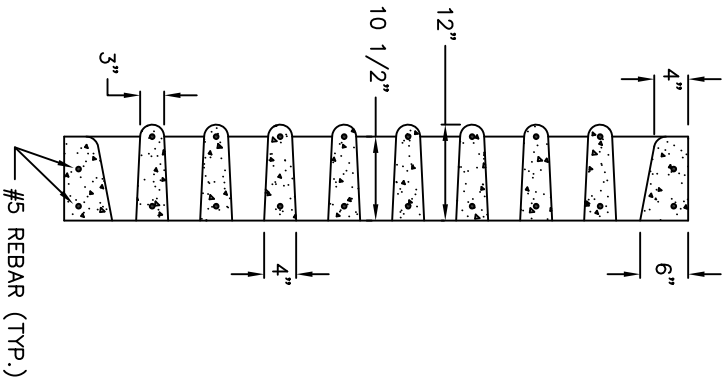
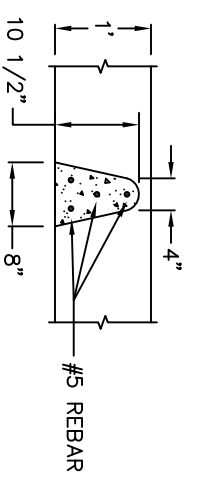


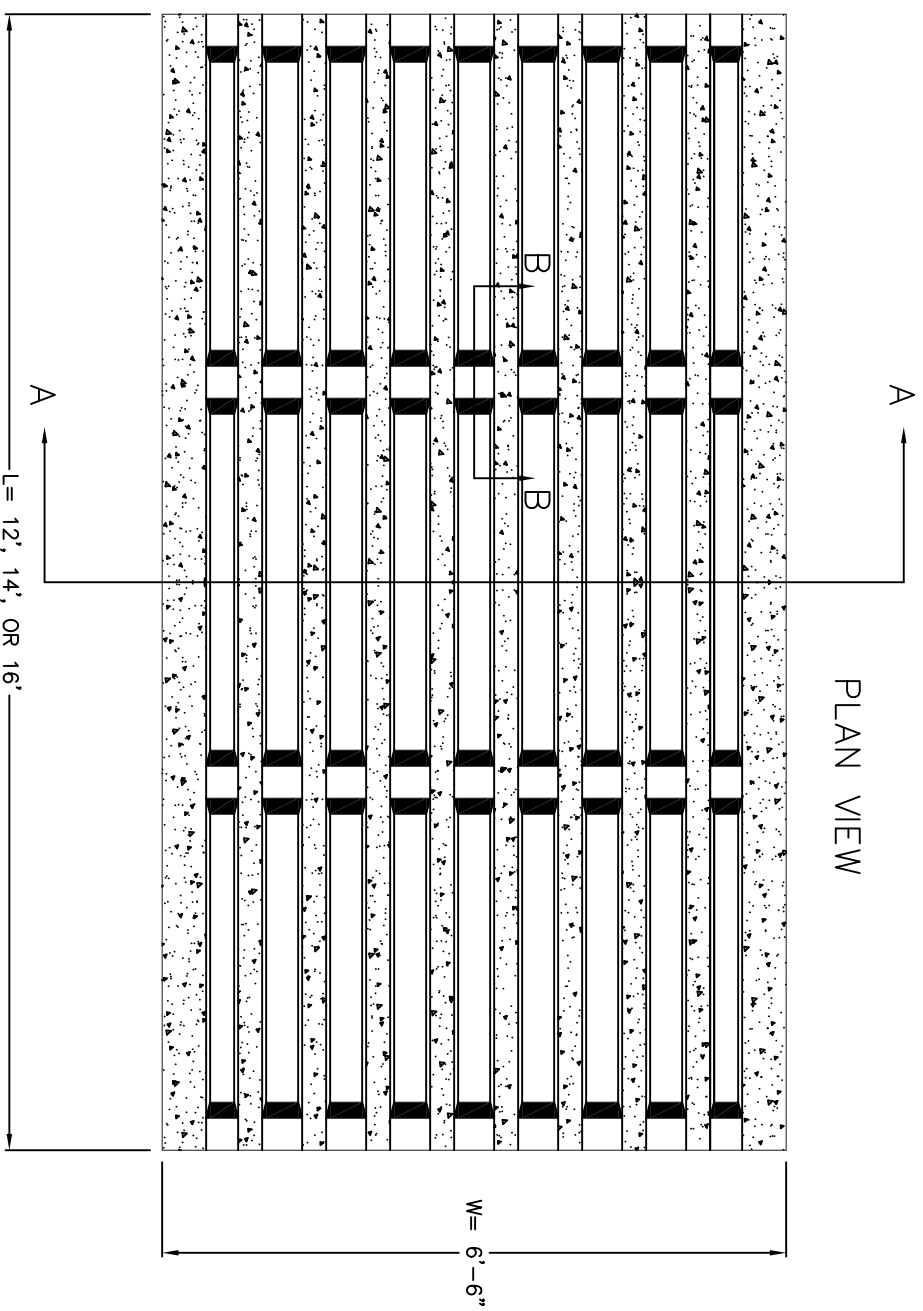
SECT. A-A



SECT. B-B



PLAN VIEW



- NOTES:**
1. APPROX. WEIGHTS:
 L = 12' (6,000#), 14' (6,800#), 16' (7,200#)
 2. ALL CONCRETE IN PRECAST MEMBERS SHALL BE 5000 PSI.
 3. APPROVED MANUFACTURERS:
 - SMITH-CAROLINA PRECAST CONC. CORP. (336) 349-2905
 - OR APPROVED EQUAL
 4. UPON ENGINEERS APPROVAL, TUBULAR STEEL ALTERNATIVES MAY BE USED.

CITY OF HIGH POINT
 NORTH CAROLINA
 ENGINEERING SERVICES DEPARTMENT

APPROVED: FEBRUARY 17, 2009
BKR
 DIRECTOR

ISSUED 2-17-09

REVISIONS

STANDARD DRAWING FOR
CATTLE GUARD TIRE WASH RACK
 FOR CONSTRUCTION ENTRANCES

TIREWASH1.DWG
603.00
 SHEET 1 OF 2